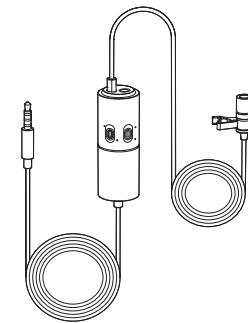


Godox

LMS-60G

Omnidirectional Lavalier Microphone
Standard Gain



说明书 | Instruction Manual

前言

欢迎使用可调增益全向型单领夹式麦克风LMS-60G，本产品由一个全向型麦克风组成，线长6米；适用于采访、演示文稿、播客、网络直播等多种场景。可以用于手机、相机、摄像机、录音机、电脑或其他音频/视频录制设备。请仔细阅读本说明书，以便能正确的操作，发挥本产品的优越性能。

产品特点

1. 尺寸迷你，随身携带；
2. 供电仅需一个 LR44 纽扣电池；
3. 全铝合金机身打造，耐用美观；
4. 特制的声学海绵套具备降噪功能，使声音更柔和细腻；
5. 可调增益，根据录音环境切换到 0/-10dB；
6. 在智能手机录音模式下，允许耳机回放监听；
7. 一体式，无需安装，即插即用。

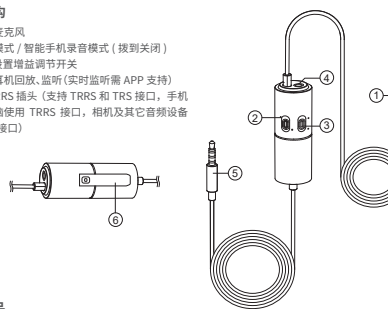
警告

- △ 请勿私自拆卸产品，如产品出现故障须由本公司或授权的维修人员进行检查维修。
- △ 请保持干燥：请勿用湿手接触产品，亦不可将产品浸入水中或暴露于雨中。
- △ 请勿让儿童接触本产品。
- △ 请勿在易燃易爆环境中使用。在这些场合下，请注意相关警告标识。
- △ 请勿放置在超过 40 度的高温环境中。
- △ 请仔细阅读并遵守由厂商提供的警告或指示。

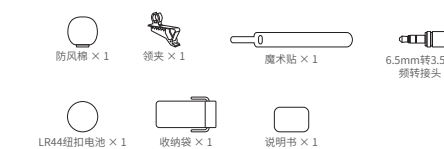
产品描述

1. 产品结构

- ① 全指向型麦克风
- ② 相机录音模式 / 智能手机录音模式（拨到关闭）
- ③ 0/-10dB 设置增益调节开关
- ④ 支持使用耳机回放、监听（实时监听需 APP 支持）
- ⑤ 3.5mm TRRS 插头（支持 TRRS 和 TRS 接口，手机或部分电脑使用 TRRS 接口，相机及其它音频设备使用 TRS 接口）
- ⑥ 夹子



2. 标配物品



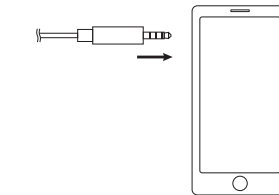
操作使用

1. 此产品属于即插即用配件，兼容多种设备；
2. 用领夹将麦克风固定在衣服前面，距离脸部 20 厘米左右；
3. 建议您始终使用防风棉，以避免风噪；
4. 0/-10dB 设置增益调节开关，建议使用 -10dB，这样有效减少拾入；
5. 耳机监听——LMS-60G 切换到手机录音模式在智能手机上使用，可以插入耳机，回放监听录制效果。

(一)手机使用时:

1. 将 LMS-60G 电源开关切换到“OFF/SmartPhone”档（使用前请将档位调至此处，否则无法录音）；
2. 将 3.5mm TRRS 插头插入智能手机的音频接口中（如非 3.5mm 接口的智能手机需要使用转接线）；
3. 打开音频或视频录制应用程序并开始录制。

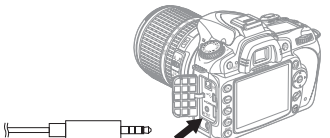
注意用于智能手机时无需安装电池。



(二)相机或其它设备使用时:

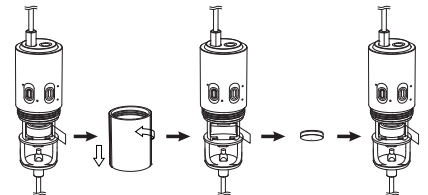
1. 需要安装电池；
2. 将 LMS-60G 电源开关切换到“Camera”档（使用前请将档位调至此处，否则无法录音）；
3. 将 3.5mm TRRS 插头插入单反相机、摄像机的外接麦克风输入口，然后开始拍摄。

注意您使用的设备是否置有外接麦克风输入口，请与设备制造商核实。



(三)更换电池:

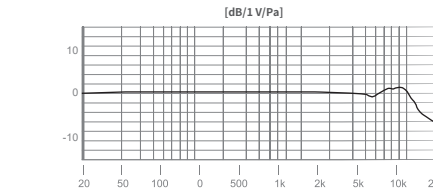
1. 打开电池盒；
2. 取出旧电池，放入新电池，注意放入电池的正负极方向。



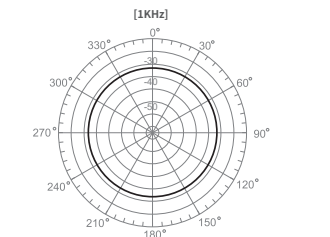
规格参数

型号	LMS-60G
类型	电容式(驻极体)
插头	3.5mm TRRS插头
拾音模式	全指向性
峰值声压级	120dB (THD≤5% @1KHz)
频率响应	20Hz-20KHz
灵敏度	-32±2dB (0dB=1V/Pa @1KHz)
信噪比	74dB
增益调节	0dB/-10dB
工作温度	-10°C-50°C
使用电池	LR44纽扣电池
长度/重量	6米/58g (含电池)
机身材质	金属铝灰色

频率响应图



指向图



维护保养

避免跌落: 如果受到强烈碰撞或震动,此设备可能会发生故障。
保持干燥: 本产品是非防水产品,如果将其浸入水中或放置于高温度的环境中将可能发生故障。内部构造生锈可能会导致无法修理的损害。
避免温度骤变: 温度的突变,诸如在寒冷天进出温暖的大楼将可能会使产品内部结露。为避免结露,请将产品事先装入手提袋或塑料包内,以防温度突变。
远离强磁场: 无线电广播发射机等设备产生的强静电或强磁场可能会干扰本产品正常工作。
领夹麦克风属于消耗品,不在 1 年保修范围。
如果本品出现故障或者被水淋湿,在专业人员维修后方可继续使用。
如有技术更改,恕不另行通知。

产品保修

尊敬的用户,本保修卡是申请保修服务的重要凭证,请您配合销售商填写并妥善保管,谢谢!

产品信息	型号	产品条码
用户信息	姓名	联系电话
	通信地址	
销售商信息	名称	
	联系电话	
	通信地址	
	销售日期	
备注		

注:此表应由销售商盖章确认。

产品信息

本文件适用于相关《产品保修信息》(见后面说明)所列产品,其他非属此范围的产品或部件(如促销品、赠品及其他出厂后附加的部件等)不在此保修承诺内。

保修期

产品及部件的相应保修期按相关的《产品保修信息》执行。保修期自产品首次购买日起算,购买日以购买产品时保修卡登记日期为准。

如何获得保修服务

要保修服务,您可直接与产品销售商或授权服务机构联系,也可拨打神牛产品售后服务电话,与我们联系,由我们的服务人员为您安排服务。申请保修时,您应提供有效的保修卡作为保修凭证,方可获得保修。如您不能提供有效的保修卡,则在我们可确认产品或部件属于保修范围的情况下,也可以为您提供保修,但这不作为我们的义务。

不适用保修的情况

如产品存在下列情况,本文件项下的保证和服务将不适用 ① 产品或部件超过相应保修期; ② 错误或不适当使用、维护或保管导致的故障或损坏,如:不当搬运;非按产品合理预期用途使用;不当插拔外接设备;跌落或外力挤压;接触或暴露于不适当温度、溶剂、酸碱、水浸或潮湿环境; ③ 由非神牛授权机构或人员安装、修理、更改、添加或拆卸造成的故障或损坏; ④ 产品或部件原有识别信息被修改或删除; ⑤ 无有效保修卡; ⑥ 使用非合法授权、非标准或非公开发行的软件造成的故障或损坏; ⑦ 因不可抗力或意外事件造成的故障或损坏; ⑧ 其他非因产品本身质量问题导致的故障或损坏。遇上述情况,您应向相关责任方寻求解决,神牛对此不承担任何责任。因非在保修期或保修范围内的部件、附件或软件导致产品不能正常使用的,不是保修范围内的故障。产品使用过程中正常的脱色、磨损和消耗,不是保修范围内的故障。

产品保修和服务支持信息

产品的保修期和服务类型按以下《产品保修信息》执行:

产品类别	选件名称	保修期(月)	保修服务类型
部件	主机	12	客户送修
	电池	3	客户送修
	充电器、电源线,同步线等带电性能的部件	12	客户送修
其他	如电池盒、防风棉、防风毛罩、锁紧装置、手提绳、扎带、魔术贴、领夹、便携袋、包装等	无	无保修

神牛产品售后服务电话 0755-29609320-8062

Forward

Thank you for purchasing Godox Omnidirectional Lavalier Microphone Standard Gain **LMS-60G**. This product is consist of one omnidirectional microphone with 6-meter cable. This omnidirectional microphone is perfect for interview, video recording, livestream, program presentation, etc. It can be applied on smartphone, camera, camcorder, sound recorder, computer or more video & audio recording equipment. Please read this manual carefully before using to make sure the correct operation and exert the optimum function.

Product Features

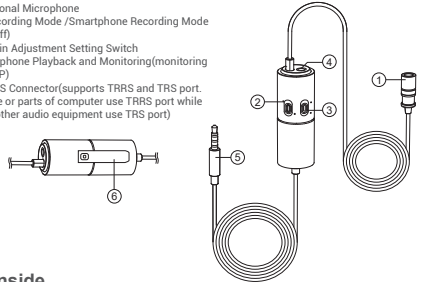
1. Compact and lightweight with great portability.
2. Powered by a LR44 button cell.
3. Microphone body is made of aluminum, which is durable and delicate.
4. With specially made acoustic windscreen to reduce noise and make sound more soft and graceful.
5. Can be switched to 0/-10dB according to recording environment via gain adjustment.
6. Support earphone playback and monitoring in recording mode of smartphone.
7. One-piece design which can be used directly.

Warning

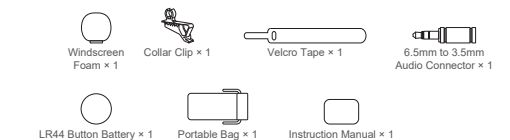
- ⚠ **Do not disassemble. Should repairs become necessary, this product must be sent to an authorized maintenance center.**
- ⚠ **Always keep this product dry. Do not use in rain or in damp conditions.**
- ⚠ **Keep out of reach of children.**
- ⚠ **Do not use the flash unit in the presence of flammable gas. In certain circumstance, please pay attention to the relevant warnings.**
- ⚠ **Do not leave or store the product if the ambient temperature reads over 40°C.**
- ⚠ **Please carefully read and observe the warnings and instructions provided by the manufacturer.**

Product Description

- ① Omnidirectional Microphone
- ② Camera Recording Mode /Smartphone Recording Mode (switch to off)
- ③ 0/-10dB Gain Adjustment Setting Switch
- ④ Support Earphone Playback and Monitoring(monitring requires APP)
- ⑤ 3.5mm TRRS Connector(supports TRRS and TRS port. Smartphone or parts of computer use TRRS port while camera or other audio equipment use TRS port)
- ⑥ Clip



What's Inside

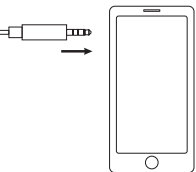


Operation

1. This product can be used directly, which is compatible with various of equipment.
2. Please fix the microphone onto your clothes which is 20 centimeters far away from your face.
3. It is recommended to use windscreen all the time to avoid wind noise.
4. It is recommended to set gain adjustment to -10dB, which can reduce the pick-up of background sound effectively.
5. Earphone monitoring: when LMS-60G switches to smartphone recording mode and being used on the smartphone, earphone can be inserted to listen to the playback of monitoring.

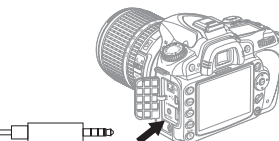
Being used on smartphone

1. Turn the power switch of LMS-60G to OFF/Smartphone (please set the microphone to this step, otherwise, recording cannot be carried out).
 2. Insert 3.5mm TRRS connector into the audio port of smartphone (use a convert cable if the smartphone do not have 3.5mm port).
 3. Open the audio or video recording applications to start recording.
- Note: When being used on smartphone, there is no need to install the battery.**



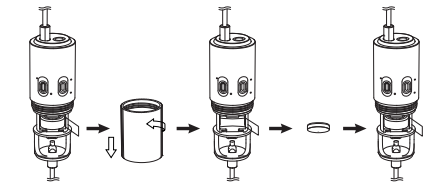
Being used on camera

1. Battery should be installed.
 2. Turn the power switch of LMS-60G to Camera (please set the microphone to this step, otherwise, recording cannot be carried out).
 3. Insert 3.5mm TRRS connector into the microphone input port of DSLR camera and camcorder. Then, start shooting.
- Note: please make sure the used equipment has microphone or not. Please verify this with the equipment's manufacturer.**



Battery Replacement

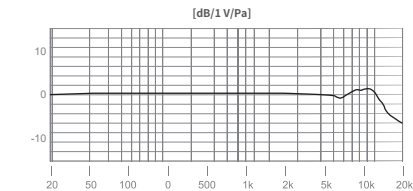
1. Open the battery compartment.
2. Take out the old battery and replace it with a new one. Please not the directions of battery anode and cathode.



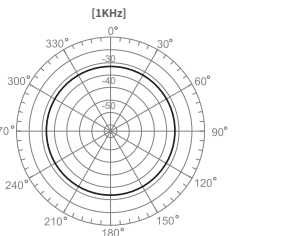
Technical Data

Mode	LMS-60G
Type	Capacitive (electret)
Plug	3.5mm TRRS Connector
Pick-up sound mode	Omnidirectional
Peak Sound Pressure Level	120dB (THD≤5% @1KHz)
Frequency Range	20Hz-20KHz
Sensitivity	-32±2dB (0dB=1V/Pa @1KHz)
Signal Noise Ratio	74dB
Gain Adjustment	0dB/-10dB
Working temperature	-10°C-50°C
Battery	LR44 Button Battery
Length/Weight	6m / 58g (battery is included)
Material	Aluminum in grey

Frequency Response Graph



Directivity Graph



Maintenance

Avoid sudden drops. The device may fail to work after strong shocks, impacts, or excess stress.

Keep dry. The product isn't water-proof. Malfunction, rust, and corrosion may occur and go beyond repair if soaked in water or exposed to high humidity.

Keep away from strong magnetic field. The strong static or magnetic field produced by devices such as radio transmitters leads to malfunction.

This product belongs to consumables and do not support one-year warranty.

If the product had failures or was wetted, do not use it until it is repaired by professionals.

Changes made to the specifications or designs may not be reflected in this manual.

Warranty

Dear customers, as this warranty card is an important certificate to apply for our maintenance service, please fill in the following form in coordination with the seller and safe-keep it. Thank you!

Product Information	Model	Product Code Number
Customer Information	Name	Contact Number
	Address	
Seller Information	Name	
	Contact Number	
	Address	
	Date of Sale	
Note		

Note: This form shall be sealed by the seller.

Applicable Products

The document applies to the products listed on the Product Maintenance Information (see below for further information). Other products or accessories (e.g. promotional items, giveaways and additional accessories attached, etc.) are not included in this warranty scope.

Warranty Period

The warranty period of products and accessories is implemented according to the relevant Product Maintenance Information. The warranty period is calculated from the day (purchase date) when the product is bought for the first time, and the purchase date is considered as the date registered on the warranty card when buying the product.

How to Get the Maintenance Service

If maintenance service is needed, you can directly contact the product distributor or authorized service institutions. You can also contact the Godox after-sale service call and we will offer you service. When applying for maintenance service, you should provide valid warranty card. If you cannot provide valid warranty card, we may offer you maintenance service once confirmed that the

product or accessory is involved in the maintenance scope, but that shall not be considered as our obligation.

Inapplicable Cases

The guarantee and service offered by this document are not applicable in the following cases: ①. **The product or accessory has expired its warranty period;** ②. **Breakage or damage caused by inappropriate usage, maintenance or preservation, such as improper packing, improper usage, improper plugging in/out external equipment, falling off or squeezing by external force, contacting or exposing to the improper temperature, solvent, acid, base, flooding and damp environments, etc;** ③. **Breakage or damage caused by non-authorized institution or staff in the process of installation, maintenance, alternation, addition and detachment;** ④. **The original identifying information of product or accessory is modified, alternated, or removed;** ⑤. **No valid warranty card;** ⑥. **Breakage or damage caused by using illegally authorized, nonstandard or non-public released software;** ⑦. **Breakage or damage caused by force majeure or accident;** ⑧. **Breakage or damage that could not be attributed to the product itself.** Once met these situations above, you should seek solutions from the related responsible parties and Godox assumes no responsibility. The damage caused by parts, accessories and software that beyond the warranty period or scope is not included in our maintenance scope. The normal discoloration, abrasion and consumption are not the breakage within the maintenance scope.

Maintenance and Service Support Information

The warranty period and service types of products are implemented according to the following **Product Maintenance Information**:

Product Type	Name	Maintenance Period (month)	Warranty Service Type
Parts	Product Main Body	12	Customer sends the product to designated site
	Battery	3	Customer sends the product to designated site
	Charger, Power Cable, Sync Cable, Electrical Parts etc.	12	Customer sends the product to designated site
Other Items	Battery Case, Windproof Sponge, Wind Cap, Locking Device, Lanyard, Tie, Velcro Tape, Clip, Bag, Package etc.	No	Without warranty

Godox After-sale Service Call 0755-29609320-8062



神牛微信公众号
Follow Wechat Public Account

合格证
QC PASS

深圳市神牛摄影器材有限公司

地址: 深圳市宝安区福海街道塘尾社区耀川工业区厂房2栋
电话: +86-755-29609320(8062) 传真: +86-755-25723423 邮箱: godox@godox.com

GODOX Photo Equipment Co., Ltd.

Address: Building 2, Yaohuan Industrial Zone, Tangwei Community, Fuhai Street, Bao'an District, Shenzhen 518103, China

Tel: +86-755-29609320(8062) Fax: +86-755-25723423

E-mail: godox@godox.com

godox.com

Made In China

